

## DAY1

### 建築家や建築教育のためのヒューマニティ DX

### Humanitarian Digital Transformation for architects and architectural education

2021年12月9日(木) 9:30~12:00 | Dec. 9, 2021, 9:30-12:00



### What if....."Reflections on architectural education for an unpredictable future"

What if..... 「予測不可能な未来に向けての建築教育に関する考察」

**Hitoshi Abe** 阿部 仁史

Director, xLAB, UCLA <https://xlab.aud.ucla.edu>

Professor, Department of Architecture and Urban Design, UCLA

Terasaki Chair for Contemporary Japanese study

Principal, Atelier Hitoshi Abe <https://aha.design/>

ディレクター、XLAB @ UCLA

カリフォルニア大学ロサンゼルス校建築都市デザイン学科教授

テラサキ現代日本研究チェアー

阿部仁史アトリエ代表

## Summary 要旨

A future used to be considered to have 50 year life span, But since the 60s, the period of the future has become shorter day by day due to the acceleration of technological and social changes, until finally the future has been incorporated into the present. The future has been transformed from a “Future world as it should be” to a “Multiverse of possibilities of the present”.

In such an age when the concept of time has been removed from the future, shouldn't architectural education, which seeks ways of constructing the future environment, also shift from the traditional act of "instructing the orientation towards a certain future" to the act of "exploring together, the many possibilities existing at the present moment" ?

In this lecture, I would like to discuss my own attempt at this paradigm shift in architectural education, introducing some examples..

一つの未来が発展から衰退まで到達するのに 50 年と考えられていた時代から、技術的・社会的変化の加速により未来の期間は日々短くなって、ついには未来は現在に取り込まれ、未来は「あるべき将来の世界」から、「様々な現在の可能性が作る多元世界」というようなものに変容したと考えている。こうした未来から時間という概念が取り払われた時代において、将来の環境の構築方法を模索する建築教育も、従来の「あるべき未来に向かって、その道筋をつける指向性を指導する行為」から、「多様な将来の可能性の数々をともに探る行為」へとシフトすべきではないか？本講演においては、この建築教育のパラダイムシフトに対しての自身の試みを、事例を紹介しつつ論考したい。

## Short bio 略歴

Hitoshi Abe is a Professor and former Chair in the Department of Architecture and Urban Design at UCLA and the Director of the UCLA Paul I. and Hisako Terasaki Center for Japanese Studies. Since 1992, when Dr. Abe established Atelier Hitoshi Abe, he has maintained an active international design practice based in Sendai, Japan. As a successful designer and educator who continuously lectures and publishes throughout his career, Hitoshi Abe has earned a position among the leaders in the field of Architecture and urban design for his ability to initiate productive interdisciplinary collaborations and establish professional partnerships with various constituencies. With growing geography in its portfolio, Atelier Hitoshi Abe opened its second office in Los Angeles in 2008. In 2011, together with a group of Japanese Architects, Hitoshi Abe initiated the Arch-Aid network – a voluntary network of architects established to help reconstruct the damaged community by the 2011 East Japan Great Earthquake and Tsunami. In 2017, he opened the xLAB at UCLA, which serves as an international think tank that examines architecture’s elastic boundaries through interdisciplinary collaboration.

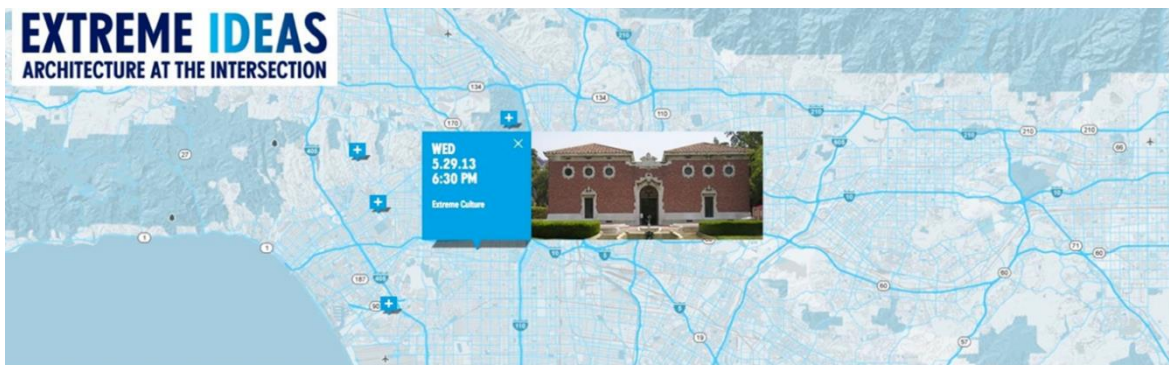
阿部仁史は、現在、UCLA の建築・都市デザイン学科の教授、UCLA Paul I. and Hisako Terasaki Center for Japanese Studies のディレクターを務める。1992 年に阿部仁史アトリエを設立して以来、仙台を拠点に国際的なデザイン活動を展開する。2008 年には、ロサンゼルスに第 2 事務所を開設する。デザイナーとして、また教育者として、講演や出版活動を継続的に行い、学際的コラボレーションを通して、様々な関係

者とプロフェッショナルなパートナーシップを確立する能力により、建築および都市デザインの分野におけるリーダーの一人として活躍している。2011年には、日本の建築家グループと共同で、東日本大震災の被災地の復興を支援するために設立された建築家の自主的なネットワーク「アーキエイド」の設立に貢献する。2017年には、建築の職能の新たな境界を模索する国際的なシンクタンク：xLABをUCLAに開設し、幅広く活動を展開している。

# IDEAS LECTURE SERIES

<p><b>Wednesday, January 15</b> <b>HYPERLOOP</b> <i>Transforming Transportation</i></p> <p>Patricia Galloway Co-Director, Hyperloop Transportation Technologies</p> <p>Marco Villa Co-Director, Hyperloop Transportation Technologies</p>	<p><b>Tuesday, February 4</b> <b>BOT &amp; DOLLY</b> <i>Movement and Precision</i></p> <p>Tobias Kinnebrew Director of Product Biology</p>	
<p><b>Tuesday, February 18</b> <b>QUALCOMM</b> <i>Smart City</i></p> <p>Brian Dunphy Senior Director of Business Development</p>	<p><b>Tuesday, March 11</b> <b>CIRQUE DU SOLEIL</b> <i>Creating on a Tight Wire</i></p> <p>Welby Alditor Director of Creation, Michael Jackson ONE</p> <p>Boris Verkhovsky Director of Performance Design and Development</p>	
<p><b>Tuesday, April 1</b> <b>RED BULL</b> <i>High Performance and Human Potential Development</i></p> <p>Andy Walshe Director of High Performance</p>	<p><b>Tuesday, April 15</b> <b>SPACE X</b> <i>The March to Mars</i></p> <p>Brandon Pearce Senior Director Avionics Hardware Development</p>	<p><b>Tuesday, April 29</b> <b>BOEING</b> <i>Organic Innovation</i></p> <p>Kevin Meredith Enterprise Innovation Cell Lead</p>
<p><b>IDEAS LECTURE SERIES 2014</b> <i>Collaborative Design for Innovation</i></p> <p>The IDEAS lecture series offers a rare opportunity for attendees to engage with speakers from the world's leading organizations. The series is designed to provide a platform for the most innovative minds in industry to share their insights and experiences. The series is free and open to the public.</p> <p>Reception at 6:45 pm   Lectures begin at 7:30 pm Lectures take place at 1005G in the Hercules Campus, 5805 S. Campus Center Drive, Los Angeles, CA 90094. Free parking is available at the venue. Lectures are free and open to the public.</p>		





## Extreme Culture: The Intermix of Real and Virtual Realities

WED 05.29.13

UCLA William Andrews Clark Memorial Library

### PANELISTS



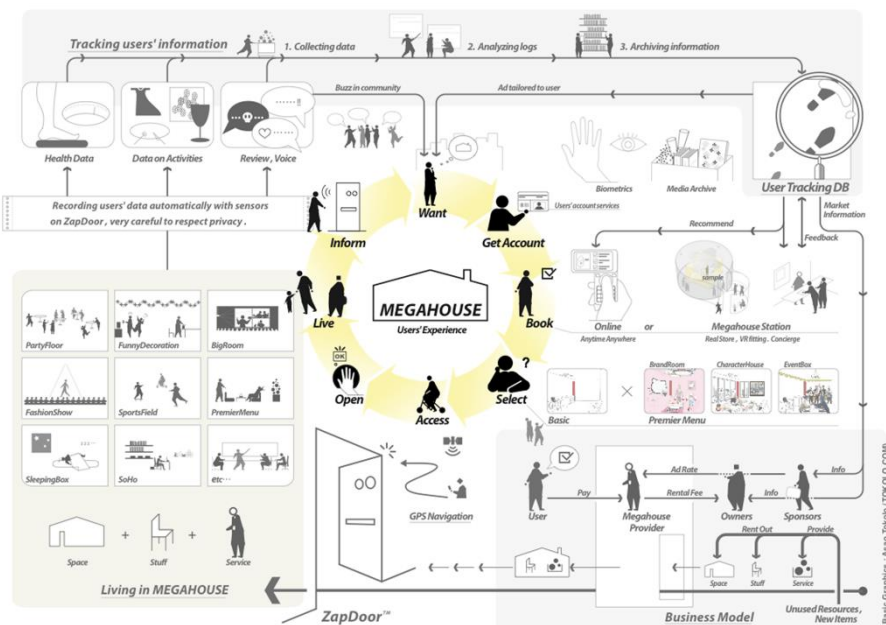
**Greg Lynn**  
Architect, Professor, UCLA A.U.D

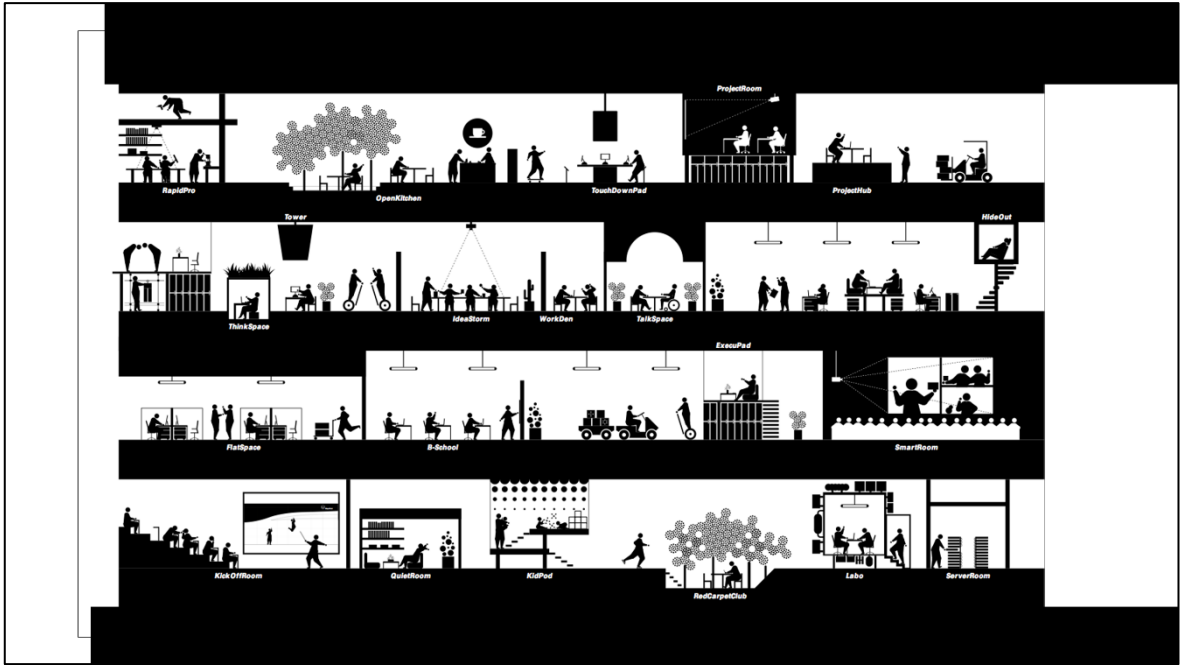
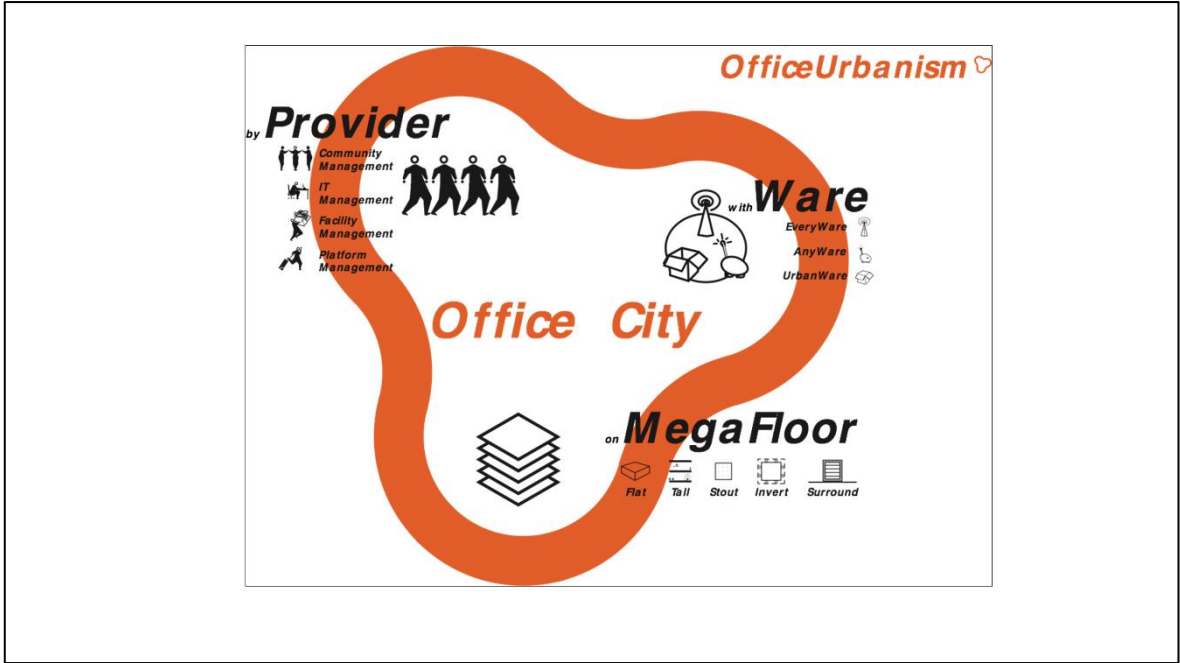


**Thomas Krens**  
Founder and CEO of Global Cultural Asset Management



**Scott Trowbridge**  
VP Creative, Walt Disney Imagineering R&D







*The city as a physical entity is now constantly splintered into pieces and reconnected in various ways by information technology.*

<h2>About</h2>		
<p><b>About</b></p> <p><b>xLAB</b> is an <b>international think tank</b> initiative that examines architecture's elastic boundaries and considers new possibilities through interdisciplinary partnerships with a range of industries-including business, technology and science – creating a vast network of possibilities that expands architecture's role and potential to serve as an active platform in which to <b>"Research, Test, Share"</b> ideas between fields, people, and places.</p>		
<h3>Research</h3>	<h3>Platform</h3>	<h3>Initiative</h3>

ArcDR3 Initiative is a 3-year global interdisciplinary architecture education project that proposes the study and design for resilience and risk reduction in our contemporary environment. It is launched in collaboration with the Association of Pacific Rim Universities (APRU) Multi-hazard program, involving participations from 11 Universities. With the urgency of establishing new strategies for designing buildings, cities and environments, ArcDR3 Initiative launches an **International Studio Platform, where research findings will be shared among all the participants.** At the conclusion of this initiative, ideas formulated by participating universities will be shared with the Japanese Ministry of Economy, Trade and Industry with a view towards establishing the content for a new disaster risk reduction certification for the **International Organization for Standardization (ISO).**

UNIVERSITY OF HONG-KONG (HONG-KONG)  
 TAIPEI UNIVERSITY OF TECHNOLOGY (TAIWAN)  
 NATIONAL UNIVERSITY OF SINGAPORE (SINGAPORE)  
 UNIVERSITY OF MELBOURNE (AUSTRALIA)  
 THE UNIVERSITY OF TORONTO (CANADA)  
 UC BERKELEY (USA)  
 PONTIFICAL CATHOLIC UNIVERSITY OF CHILE (CHILE)

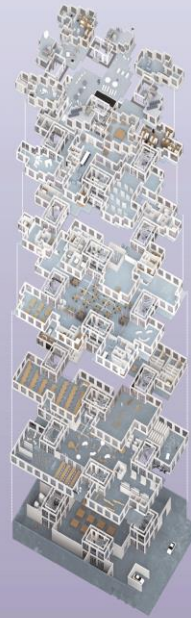
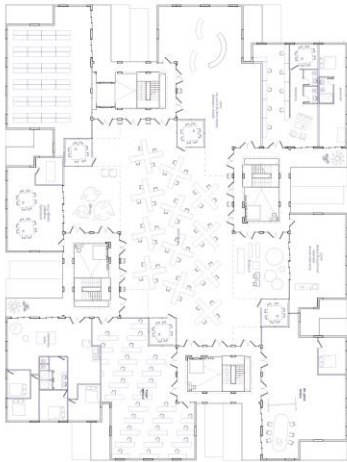
**ArcDR3**  
 Powered





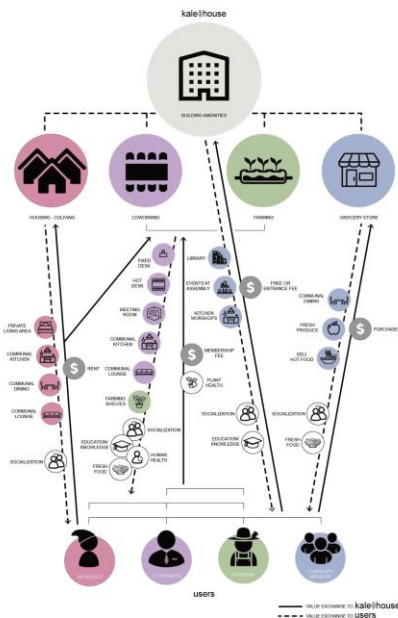
### sum1 - 4CORE

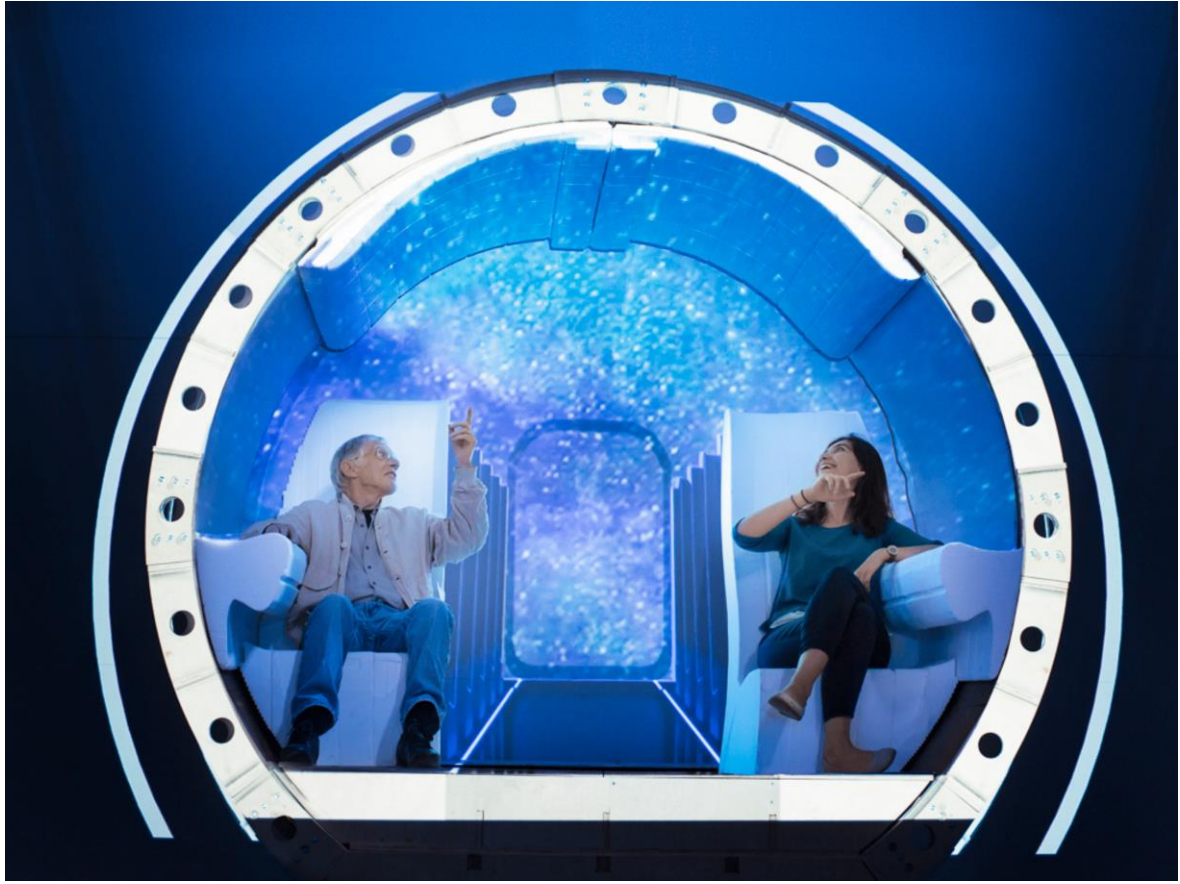
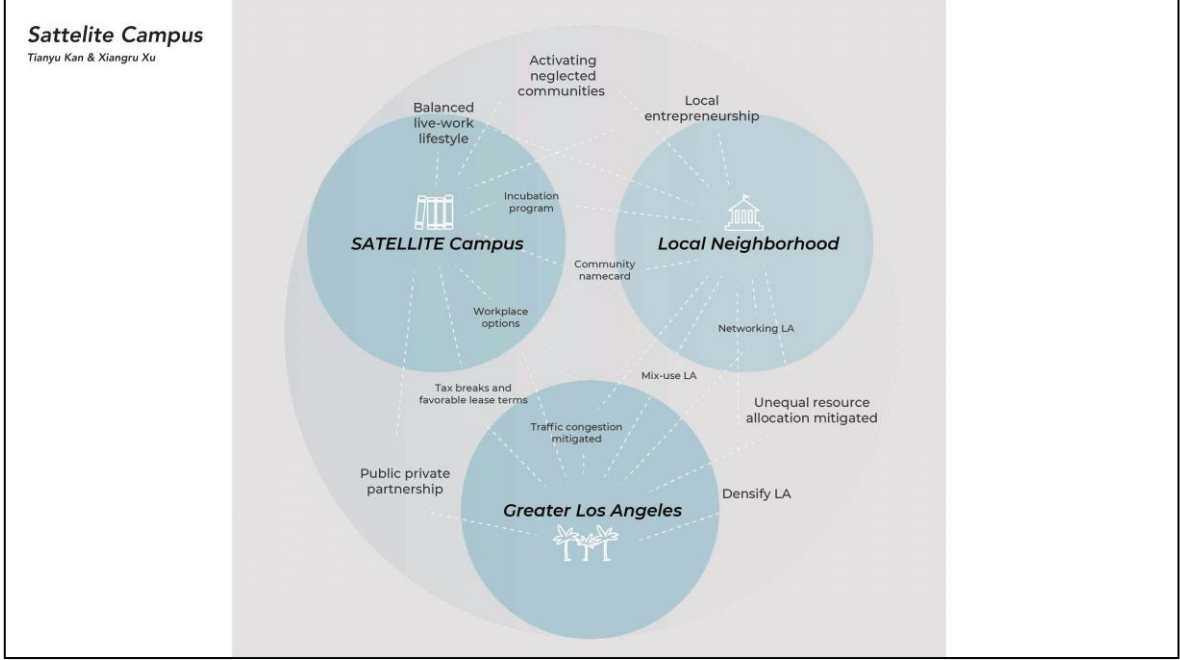
Josh Nelson



### Kale House

May Khaikaew & Neta Nakash





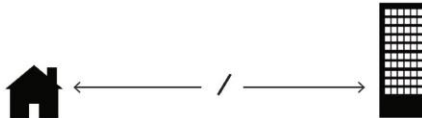
## **Paradigm Shift**

*In recent years, we have witnessed a paradigm shift in the way we live, work, and communicate. The spaces occupied by domesticity and work that have been separated since the Industrial Revolution are beginning to reconcile, creating a gray zone. The activities and experiences of daily life have exceeded the structures that contain them, becoming more fluid, interconnected, and seamless than ever before.*



## **Modern Dichotomy**

*Work activities were once contained within the home. Developments in manufacturing technology changed labor practices, moving work to a designated place.*



*Separation of work from home became a key concept in modernization, driving the design of buildings and cities.*

## Platform

**xLAB** serves as an **active platform** for creating possibilities to expand architecture's role and promote cross-disciplinary research. As a platform, xLAB **initiates and organizes programs, initiatives and operations**, in which educators and professionals are testing strategies, exchanging knowledge and presenting ideas internationally.

